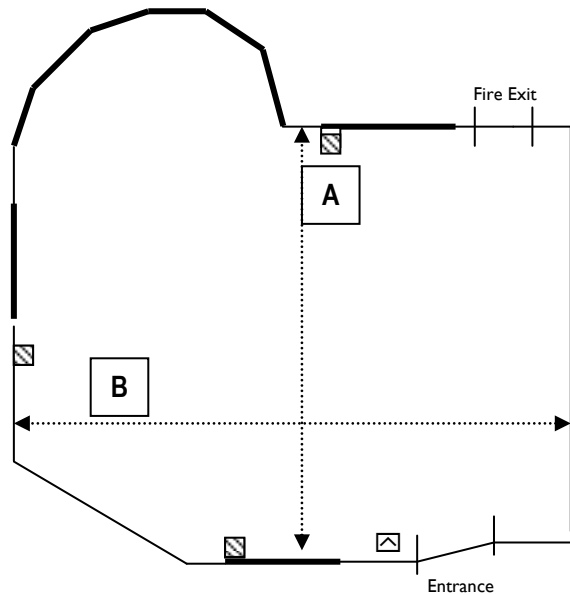





## Pendennis Lounge



### Key

-  Double 13 amp socket
-  Television/fax socket
-  Window

### Room Description

Overlooking the gardens and retaining the charm of it's original design, good natural lighting

Decorated in gold with rose pink and cornflower blue furnishings  
 Located on the ground floor  
 Suitable for: receptions, board meetings and interviews

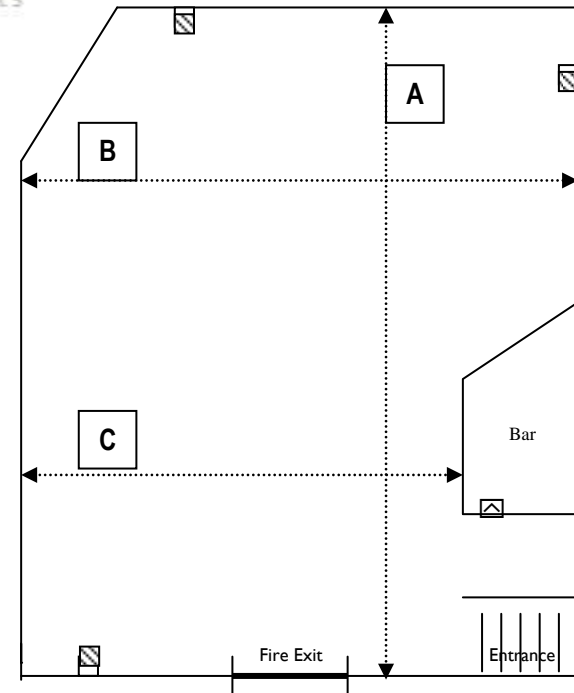
#### Dimensions

Length at A 7.00m – 23'  
 Width at B 6.40m – 21'  
 Height of room 3.30m – 11'

#### Room Capacity

Buffet 25  
 Board Room 12  
 Interview 2/4/6

## Carnes Lounge



### Room Description

Overlooking the swimming pool with adjacent patio, leading into the garden  
 The Carnes Lounge is equipped with a private bar  
 The décor is in shades of blue

Suitable for: seminars, dinner parties, board meetings, training

#### Dimensions

Length at A 9.70m – 32'  
 Width at B 9.30m – 31'  
 Width at C 7.30m – 24'  
 Height of room 2.50m – 8'

#### Room Capacity

Classroom 30  
 Banquet 40  
 Theatre 50  
 Buffet 60