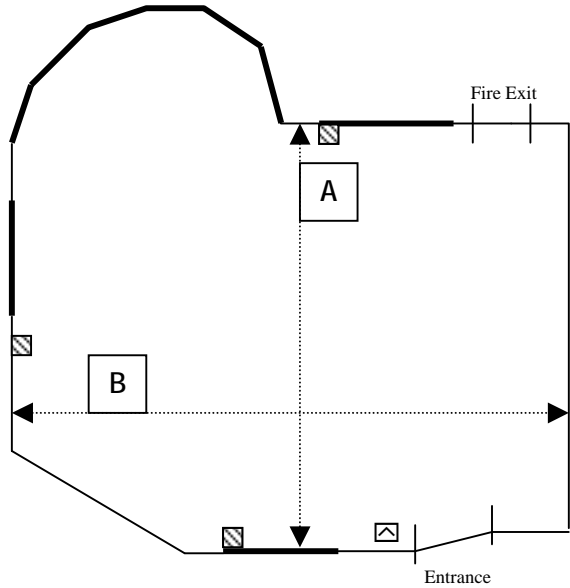


Pendennis Lounge



Key

- Double 13 amp socket
- Television/fax socket
- Window

Room Description

Overlooking the gardens and retaining the charm of its original design, good natural lighting

Decorated in gold with rose pink and cornflower blue furnishings

Located on the ground floor

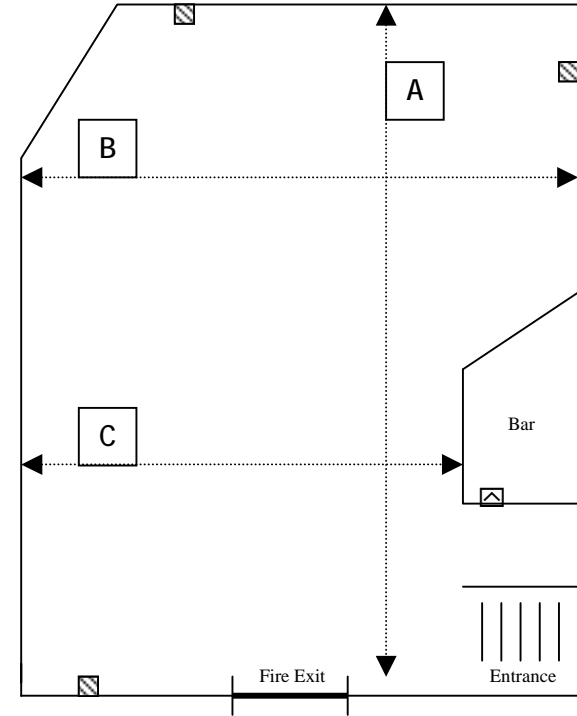
Suitable for: receptions, board meetings and interviews

Dimensions

Length at A	7.00m – 23'	Buffet	25
Width at B	6.40m – 21'	Board Room	12
Height of room	3.30m – 11'	Interview	2/4/6

Room Capacity

Carnes Lounge



Room Description

Overlooking the swimming pool with adjacent patio, leading into the garden

The Carnes Lounge is equipped with a private bar

The décor is in shades of blue

Suitable for: seminars, dinner parties, board meetings, training

Dimensions

Length at A	9.70m – 32'	Classroom	30
Width at B	9.30m – 31'	Banquet	40
Width at C	7.30m – 24'	Theatre	50
Height of room	2.50m – 8'	Buffet	60

Room Capacity