



Conferences

britain

in bloom winner

+44 (0)1326 312734



We offer a range of conference rooms and function suites suitable for all occasions: intimate/large function parties, weddings and business. Complemented by a choice of *equipment and services* should you require. .



The Green Lawns is a wi-fi zone: internet access is available throughout the hotel at the rate of £3.00 per hour. Please enquire at the reception for further details.

Car Parking

There is on-site car parking for approximately 60 cars with a limited number of covered spaces.

Transport

Car Hire and Chauffeur service can be arranged upon request.

Western Terrace,
Falmouth,
Cornwall TR11 4QJ.
United Kingdom
Email: info@greenlawnsotel.com

Packages

Daily Conference Package £24.00 per person

1. Conference room hire
2. Coffee on arrival
3. Morning coffee/tea and biscuits
4. Luncheon
5. Afternoon tea/coffee and biscuits
6. Conference equipment on site
7. Iced water and cordials
8. Room set-up
9. VAT

24 hr Conference Package £24.00 per person

24 hour single room occupancy
£115.00 per person

24 hour shared occupancy
£95.00 per person

(A special partner package is available)

1. Conference room hire
2. Room set-up
3. Coffee on arrival
4. Morning coffee/tea and biscuits
5. Luncheon
6. Afternoon coffee/tea and biscuits
7. Conference equipment (as items on site)
8. Iced Water and Cordials
9. 4 course Table d'hote dinner
10. Over-night accommodation with ensuite facilities
11. Full English Breakfast
12. Free use of the Garras Leisure Complex
13. VAT

Western Terrace,
Falmouth,
Cornwall TR11 4QJ.
United Kingdom
Email: info@greenlawshotel.com

Equipment/Services

- Overhead projector
- Screen
- Data projector
- Flipchart and pens
- Television and Video/DVD player
- P.A. System with radio microphone
- Photocopying
- Telephone
- Fax machine
- E-mail
- Secretarial services
- Syndicate rooms

Western Terrace,
Falmouth,
Cornwall TR11 4QJ.
United Kingdom
Email: info@greenlawshotel.com

Trelawney Function Suite

Room Description

Our main function suite with extensive natural lighting is refurbished in shades of gold with a dark green carpet and peach drapes. The Trelawney has a permanent dance floor.

The room is situated on the ground floor with easy access to The cloakrooms and disabled toilet facilities.

Curtaining enables the room to be divided into areas according to the size required

The room is complete with a p.a. system and portable stage

Suitable for: receptions, seminars, banquets and exhibitions

Dimensions

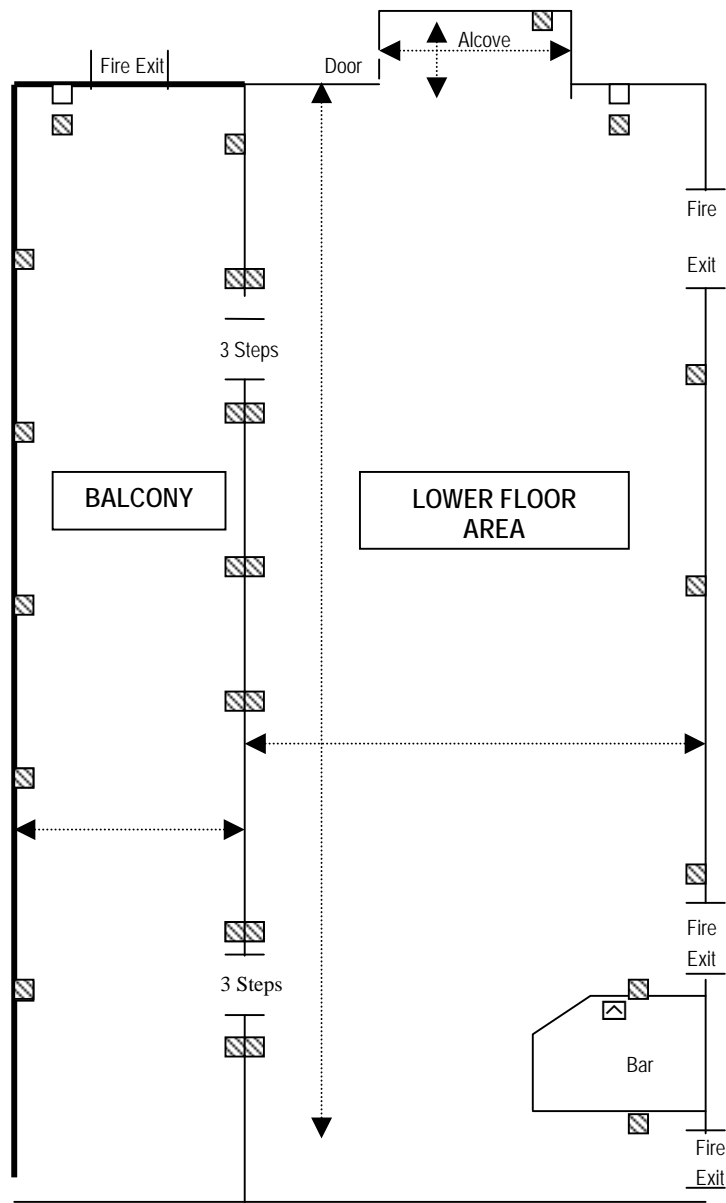
| | | | |
|----------------------|-------|---|-----|
| Room length | 18.7m | - | 61' |
| Width of lower floor | 9.6m | - | 32' |
| Width of balcony | 4.5m | - | 15' |
| Room height | 3.0m | - | 10' |
| Balcony height | 2.9m | - | 9' |
| Alcove Width | 7.4m | - | 24' |
| Alcove Length | 2.35m | - | 8' |

Room Capacity

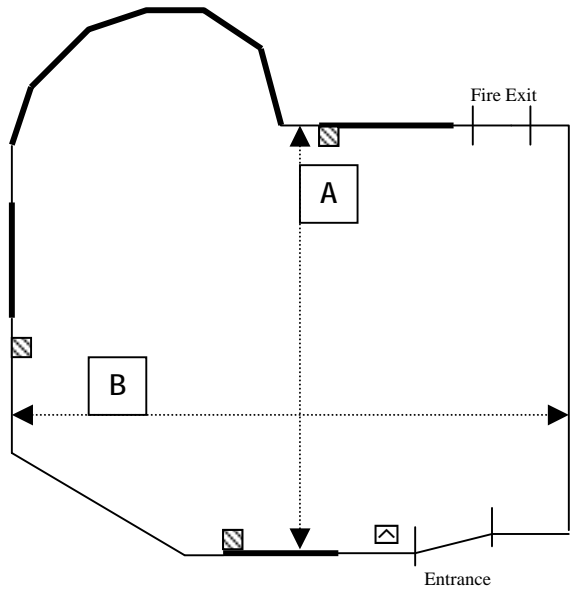
| | |
|-----------|-----|
| Classroom | 80 |
| Banquet | 170 |
| Theatre | 180 |
| Buffet | 180 |

Key

-  Television/fax socket
-  Double 13 amp socket
-  Window



Pendennis Lounge



Key

- Double 13 amp socket
- Television/fax socket
- Window

Room Description

Overlooking the gardens and retaining the charm of it's original design, good natural lighting

Decorated in gold with rose pink and cornflower blue furnishings

Located on the ground floor

Suitable for: receptions, board meetings and interviews

Dimensions

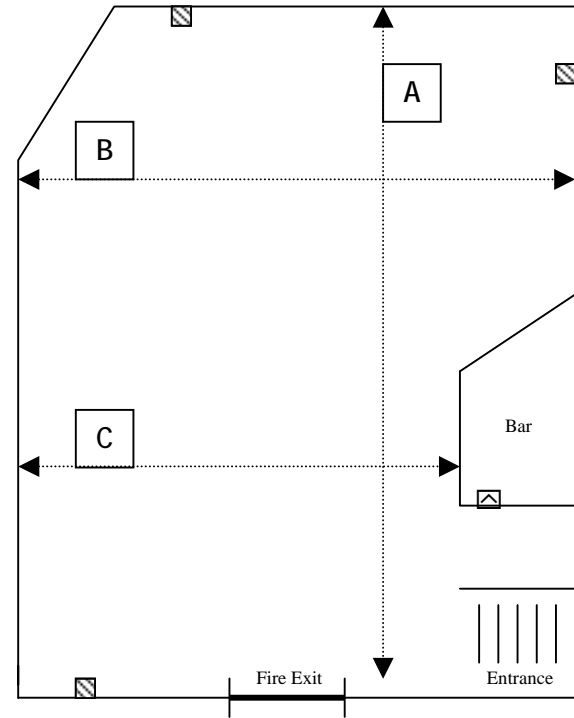
Length at A
Width at B
Height of room

7.00m – 23'
6.40m – 21'
3.30m – 11'

Room Capacity

Buffet 25
Board Room 12
Interview 2/4/6

Carnes Lounge



Room Description

Overlooking the swimming pool with adjacent patio, leading into the garden

The Carnes Lounge is equipped with a private bar

The décor is in shades of blue

Suitable for: seminars, dinner parties, board meetings, training

Dimensions

Length at A
Width at B
Width at C
Height of room

9.70m – 32'
9.30m – 31'
7.30m – 24'
2.50m – 8'

Room Capacity

Classroom 30
Banquet 40
Theatre 50
Buffet 60